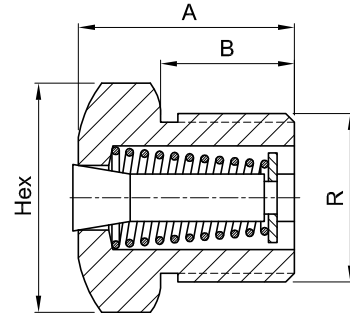
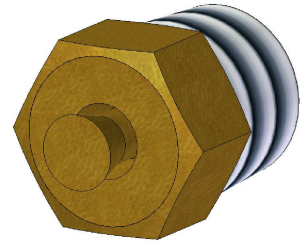


Overflow valves

They are used to remove accumulated grease in the bearing support's during regreasing cycles.

As shown in the graphical example, the grease accumulates in the free space and is evacuated through valve.



Reference	R	A	B	Hex
533 600 000	1/8 BSP	13,5	7,5	11
533 610 000	1/4 BSP	13,5	7,5	14